



Komatsu 895 Firefighter



Productive forwarder for final logging and now convertible to protect our forest as a firefighter

Firefighter Features

- Gaam MK300 high performance fire pump
- Tornado Canons (2) Remote in-cab control
- 150-450 L/min canon flow
- 20,000 Litre Baffled water tank
- Tank refill from dams, rivers or water truck

Forwarder Safety Features

- ROPS/FOPS Air con operating cab
- Marguard windows & heat reduction curtains
- Cannons can direct water over cabin
- 3,000 Litre reserve tank for operator protection
- Water cannons operated from inside cabin

The Komatsu 895 is our largest forwarder, a final logging specialist with a large load capacity. Despite its size, it remains highly agile, and the powerful Extreme Transmission option enables it to handle demanding and steep terrain. The RL 21 Firefighter Tank and rig can be fitted when needed and removed for normal logging in a quick time.





RL 21 Firefighter Kit

- 17,000 Litre Tank capacity plus 3,000 Litre reserve tank for operator safety
- Tank refill time under 30 minutes
- 45m Canon reach @ 450 L/min with 360 degree rotation
- Pitbull 1" Motorised retractable hose
- Compatible for fire retardant or option for herbicide spraying system
- 4x Hydraulic legs & rollers for on/off easy loading

Hydraulic system

	Single-circuit load-sensing with variable piston pump.
Flow	409 l/min at 1,950 rpm
Working pressure, max.	245/265 Bar
Hydraulic oil tank	150 l
Other	Pressure filter for hydrostatic circuit. Combined return oil filters for hydrostat and working hydraulics. Hydraulic oil level alarm. Sight glass level check. Clogging indicator for return oil filter. Visual alarm in cab.

Brake system

	Fully hydraulic multi-disc brakes. Hydraulic accumulator charging valve.
Driving brake/ Working brake	Multi-disc brakes in oil bath. Automatically engaged when working.
Parking brake	Spring-action brake with electro-hydraulic control. Emergency brake.
Braking performance	Conforms to ISO 11169 and VVFS 2003:17.

Cab/Ergonomics

	Tested in accordance with applicable ISO standard. Spacious and bright with very good visibility. Thermal and acoustic insulation.
Seat	Several alternative seat options. Ergonomic design with headrest, armrests, joystick keypads and lap belt. Depending on seat selection, different options are available for individual adjustment of the seat cushion, backrest and lumbar support. Seat column with 0–180° working range.
Windows	Polycarbonate windows throughout.
Heating/ventilation	Fully automatic heating and cooling unit, ACC. Filtered intake air.
Noise level	As per ISO standard
Vibrations	As per ISO standard
Other	Windscreen wipers and washers on windscreen and rear window. Fire extinguisher, 2 kg (standard in EEA countries in compliance with applicable EU Directive).
Examples of other equipment	Komatsu Comfort Ride (cab suspension). Radio with Bluetooth and hands-free support. Seat column with 220° working range. MediaZone.



Tank fits neatly between log bunks



Forwarder crane tucks in for low profile

Load area

Gross load	20,000 kg
Load area	5,8-7,4 m ² depending on options and market.
Load bunks	Mounted on runners, movable.
Load gate	Komatsu FlexGate, hydraulically flexible full-height gate, fixed or hydraulically adjustable model.
Examples of other equipment	Bunk widening, hydraulic height-adjustable stakes, first bunk connected to gate, separating supports, LoadFlex.

Crane and grapple

Crane	Komatsu 165F	Komatsu 205F
Reach	7,5/8,5/10 m	7,5/8,5/10 m
Lifting torque, gross	165 kNm	205 kNm
Slewing torque, gross	43.4 kNm	51,9 kNm
Rotator	G121/GT151/GT181	GX
Grapple	G84H/G85H/G86H/G87H	G86H/G87H/G88H
Crane tip	ProTec	ProTec
Ex. of other equipment:	Smart Crane	

Steering

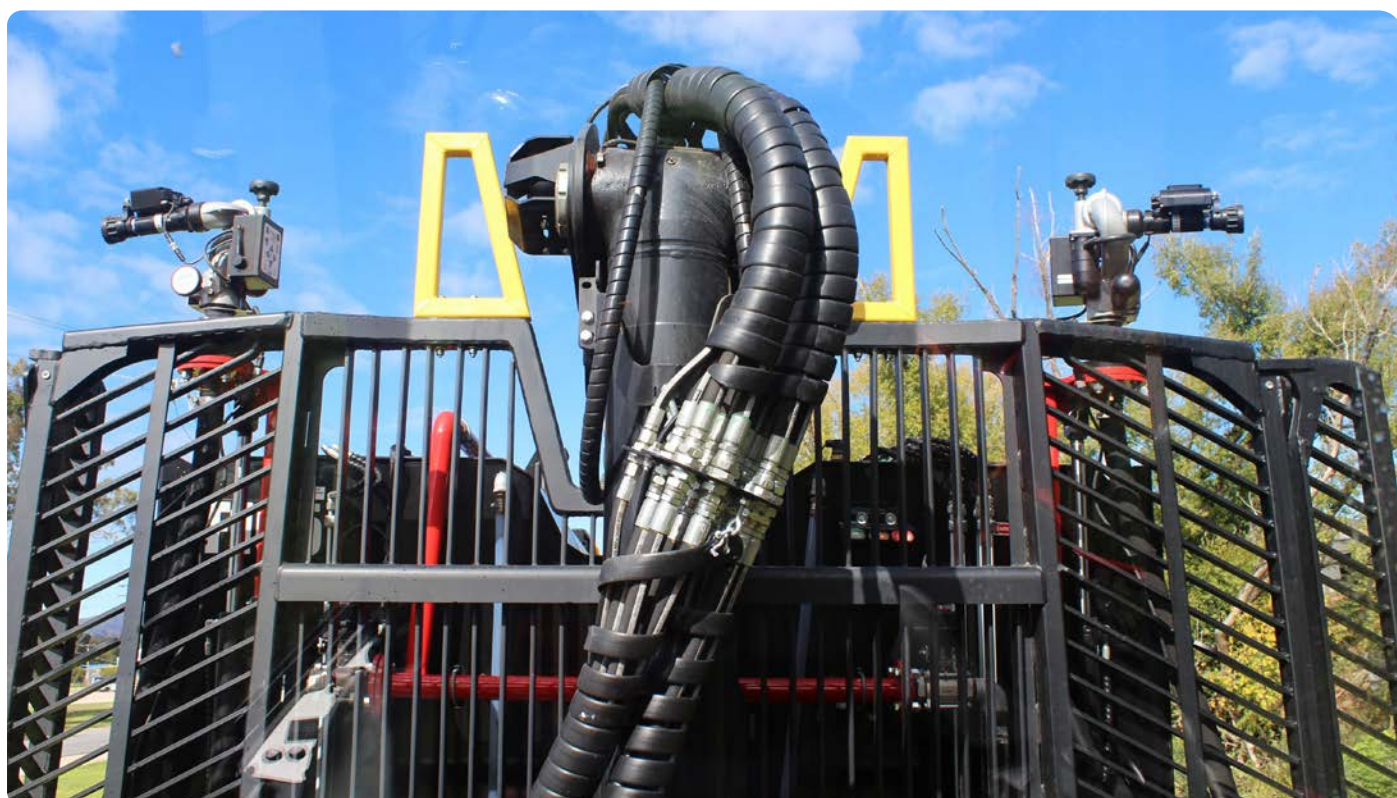
	Hydraulic articulated steering with dual double-acting hydraulic cylinders.
Joystick steering	Load-sensing (LS) proportional steering with steering rocker switch.
Electric steering	Finger-controlled mini steering wheel on right armrest.
Steering angle	±42°

Electrical system

Voltage	24 V
Battery capacity	2 x 180 Ah
Alternator	2 x 100 A

Lighting

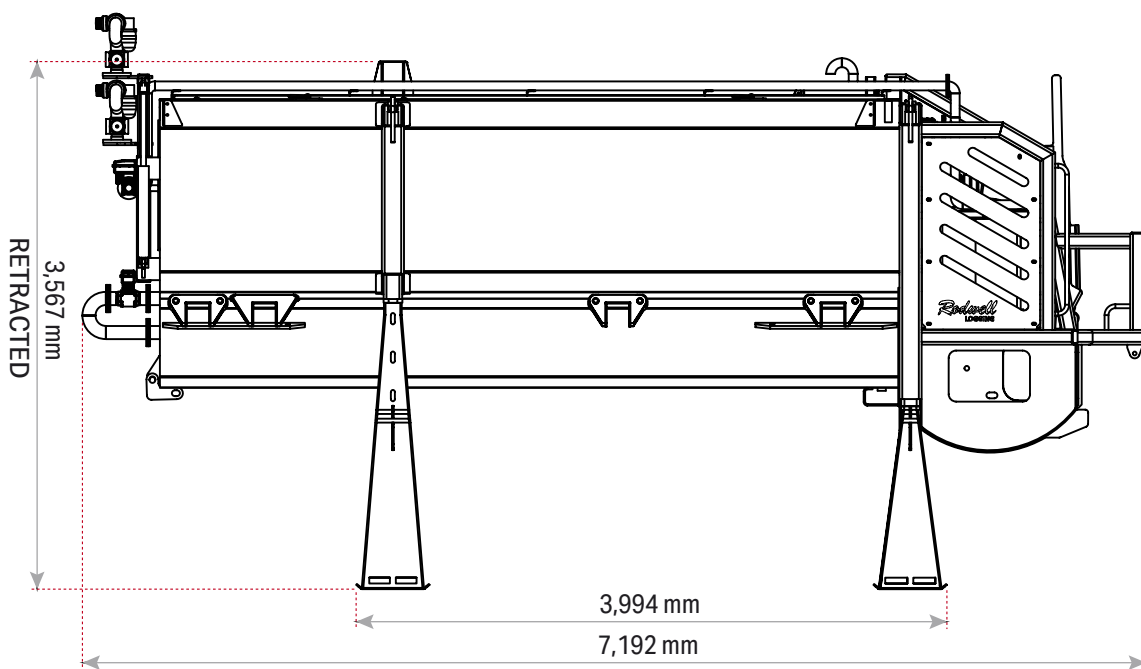
Working lights	10 lights on cab and 2 lights on crane (halogen)
Driving lights	2 front lamps (halogen)
Service lighting	LED lights in service compartments
Examples of other equipment	Working lights (LED), variations of extra working lights (LED), driving lights on rear bunk and separate mount by tow bar (LED). Driving lights, front (LED).



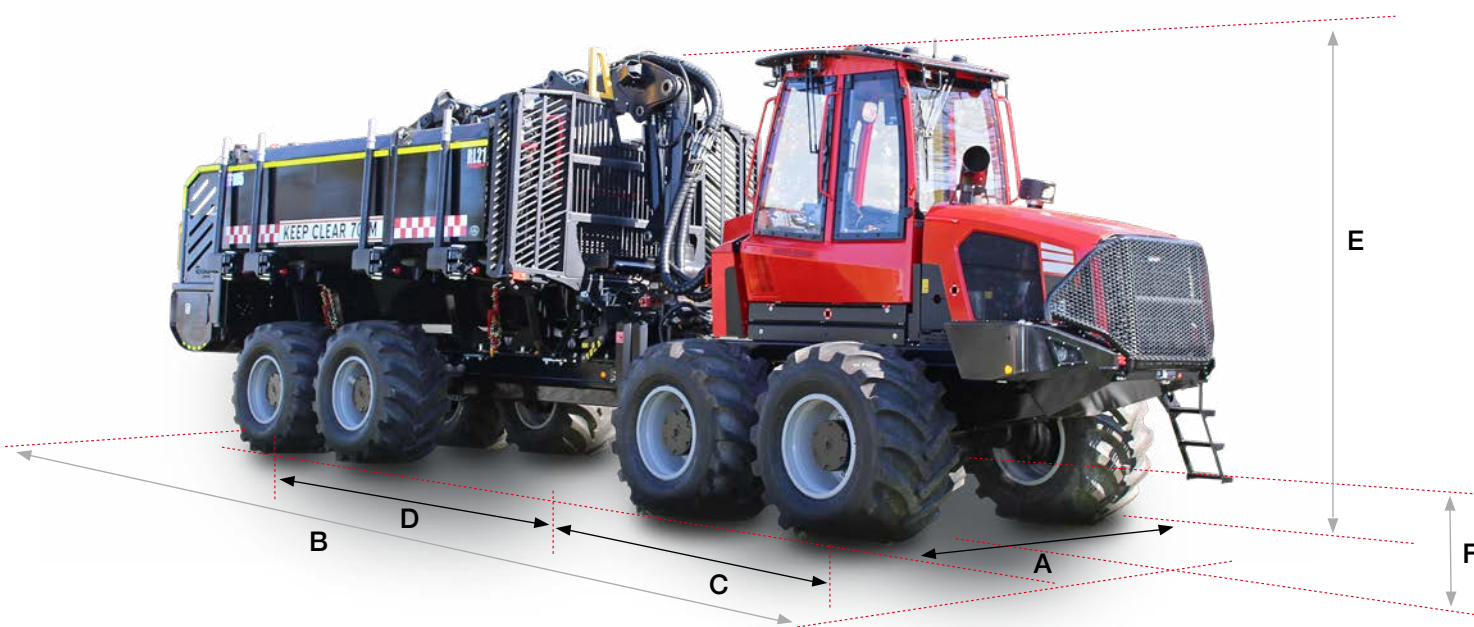
Dual Tornado Water Cannons which rotate 360 degrees

Water Tank

- Designed for Komatsu 895
- Fits neatly between frame & bunks
- Load or unload under 2 hours
- Sits on hydraulic legs



Technical specifications



Dimensions

(eight-wheeler with shortest rear frame option and 780 mm tyres)

A Width	3,160 mm
B Length, total	12,000 mm
C Length, front axle to articulated joint	2,150 mm
D Length, articulated joint to rear axle	3,900 mm
E Transport height, with hoses and tyre compression	4,050 mm
F Ground clearance, at steering coupling	790 mm

NB: Stated dimensions are nominal and may vary depending on production tolerances and optional equipment.

Weight

Weight from	6WD: 21 860 kg, 8WD: 24 830 kg
-------------	--------------------------------

Engine

	6-cylinder diesel engine with turbo and intercooler. Conforms to the requirements of EU Stage V (Europe), Tier 4F (North America), MAR-1 (Brazil) and Stage II (other countries).
Engine type	Stage V: 74 LFTN-D5, Tier 4F: 74 LFTN-D4, MAR-1: 74 CW3, Stage II: 74 LFEN-A2
Engine displacement	7.4 l
Power, max.	Stage V and Tier 4F: 214 kW DIN at 1,850 rpm, MAR-1: 193 kW DIN at 1,900 rpm, Stage II: 210 kW DIN at 1,850 rpm
Torque	Stage V, Tier 4F and Stage II: 1,280 Nm at 1,500 rpm, MAR-1: 1,000 Nm at 1,500 rpm
Fuel tank	245 l
AdBlue® tank	21.5 l (filled volume)

Transmission

	Computer-controlled hydrostatic mechanical transmission. 6/8-wheel drive. Transfer gearbox with 2 positions (high and low). Disengageable rear drive. Differential locks front and rear.
Driving speed	0–approx. 23 km/h
Tractive force	262 kN
Examples of other equipment	SpeedShift, Overspeed protection.

Frame/Axles

	Several rear frame options. Frame with smooth V-shaped bottom made of high-strength steel. Sturdy balanced portal bogie. Damping bogie tops. Towing points front and rear.
Examples of other equipment	Front blade. Stabiliser. Towing point, rear.

KOMATSU

komatsuforest.com