

# KOMATSU

## Komatsu PC300HW



Harvester/Processor

Engine Power  
194 kW

Operating Weight  
39,500 kg

# PC300HW

# Komatsu Forest's Unique Forest Combination

## Specifications

### ENGINE

Model	Komatsu SAA6D114E-3
Type	Water-cooled, 4-cycle, direct injection
Aspiration	Turbocharged, aftercooled
Number of cylinders	6
Piston displacement	8.27 L
Horsepower	
SAE J1995	Gross 194 kW 260 HP
Rated rpm	1950 rpm

### HYDRAULICS

Type	HydrauMind
Number of selectable working modes	6
Main pump	
Type	Two variable displacement piston type
Pumps for	Boom, arm, bucket, swing, and travel circuits
Maximum flow	535 L/min
Hydraulic motors	
Travel	2x axial piston motor with parking brake
Swing	1x axial piston motor with swing holding brake
Relief valve setting	
Implement circuits	37.3 MPa 380 kgf/cm <sup>2</sup>
Travel circuit	37.3 MPa 380 kgf/cm <sup>2</sup>
Swing circuit	27.9 MPa 285 kgf/cm <sup>2</sup>
Pilot circuit	3.2 MPa 33 kgf/cm <sup>2</sup>
Hydraulic cylinders	
Boom	2- 140 x 1480 x 100 mm
Arm	1- 160 x 1825 x 110 mm

### DRIVES AND BRAKES

Steering control	Two levers with pedals
Drive method	Hydrostatic
Maximum drawbar pull	264 kN 26,900 kgf
Gradeability	70%, 35°
Maximum travel speed (Auto-Shift)	
High	5.5 km/h
Mid	4.5 km/h
Low	3.2 km/h
Service brake	Hydraulic lock
Parking brake	Mechanical disc brake

### SWING SYSTEM

Drive method	Hydrostatic
Swing reduction	Planetary gear
Swing circle lubrication	Grease-bathed
Service brake	Hydraulic lock
Holding brake/Swing lock	Mechanical disc brake
Swing speed	9.5 rpm

### UNDERCARRIAGE

Center frame	X-frame
Track frame	Box-section
Seal of track	Sealed track
Track adjuster	Hydraulic
Number of shoes (Each side)	48
Number of carrier rollers	2 each side
Number of track rollers (Each side)	8

### COOLANT AND LUBRICANT CAPACITY (REFILLING)

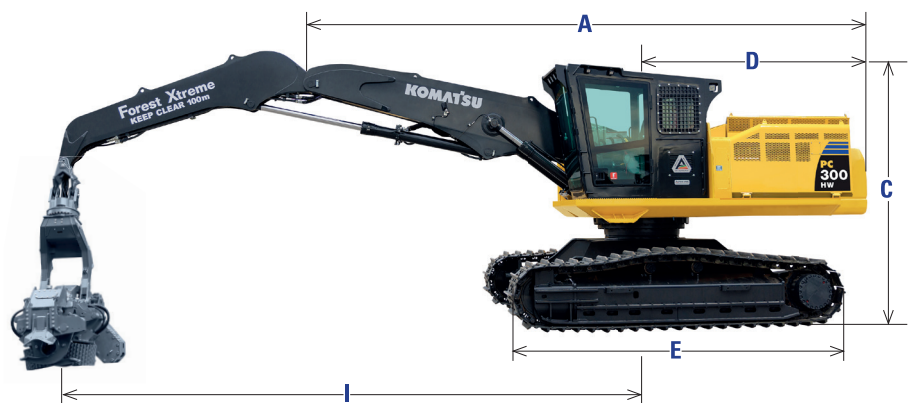
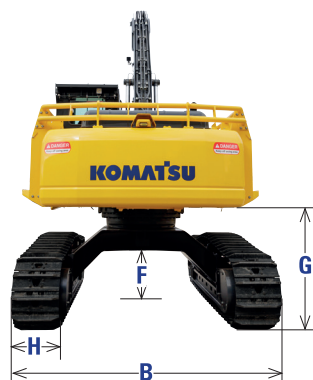
Fuel tank	605 L
Coolant	31.0 L
Engine	37.0 L
Final drive (Each side)	9.0 L
Swing drive	16.5 L
Hydraulic tank	188 L

### OPERATING WEIGHT

Operating Weight	39,500 kg
------------------	-----------

### MACHINE DIMENSIONS

A Overall length	9,650 mm
B Overall width (Track)	3,470 mm
C Overall height	3,980 mm
D Tail swing radius	3,450 mm
E Crawler length	4,955 mm
F Ground Clearance (Max)	865 mm
G Ground Clearance (Counterweight)	1,640 mm
H Track shoe width	600 mm
I Boom Reach (Hinge Pin)	10,139 mm





## Komatsu PC300HW



Komatsu Forest working closely with Komatsu Ltd Japan have developed two new Forest Xtreme models the PC270HW & PC300HW. These two models feature unique forest specifications from the Komatsu Osaka factory;

- High & Wide undercarriage / Forestry Boom Set / Forestry Cabin

Options supplied from KF are;

- Large HD Cooling / Guarding Packages / Forestry Cabins

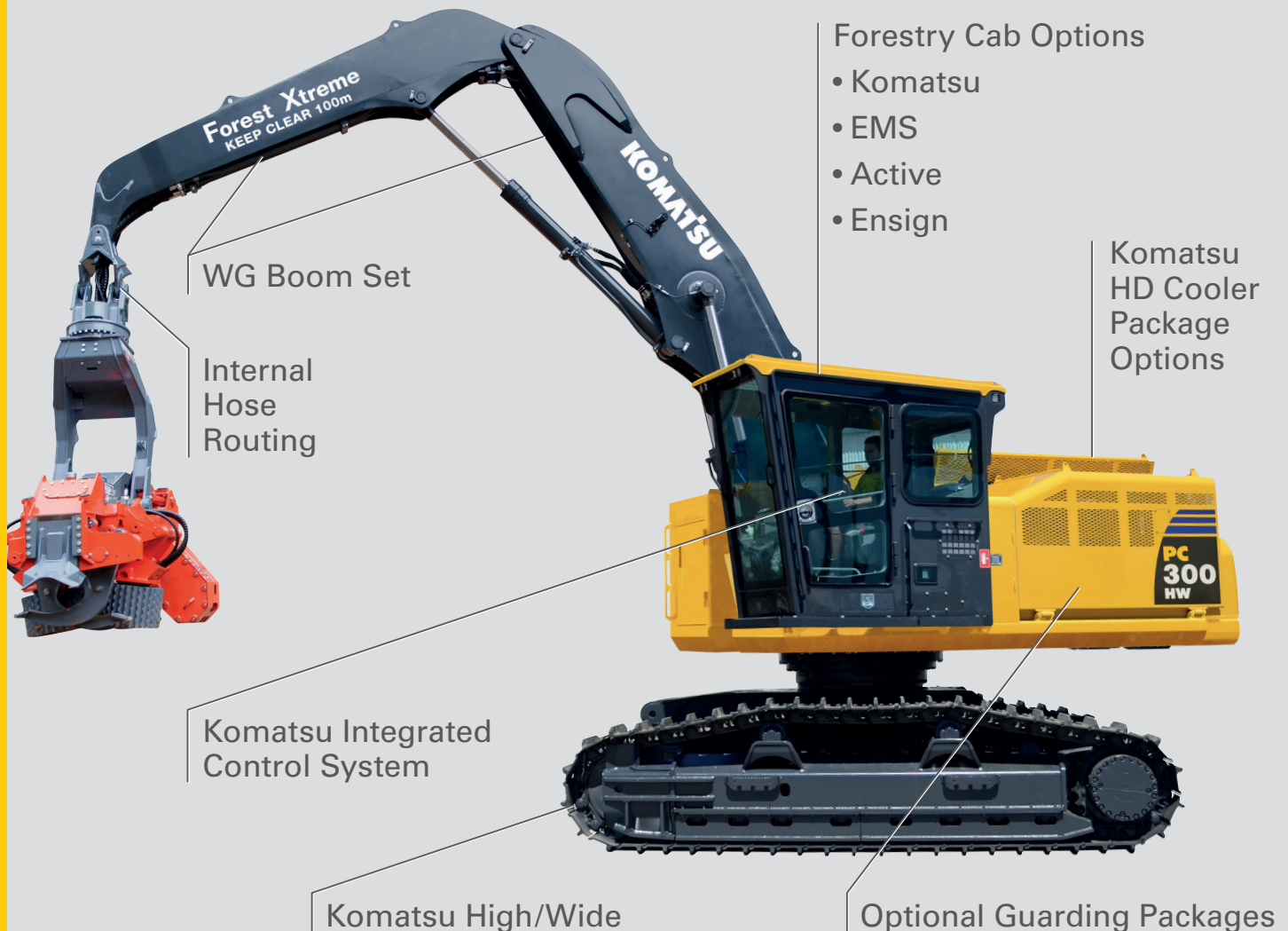
Komatsu's unique 'Forest Combinations'



Komatsu Forest Pty Ltd.  
11/4 Avenue of Americas  
Newington NSW 2127 Australia  
T: +61 2 9647 3600  
E: [info.au@komatsuforest.com](mailto:info.au@komatsuforest.com)



## Komatsu PC300HW



Komatsu Forest working closely with Komatsu Ltd Japan have developed two new Forest Xtreme models the PC270HW & PC300HW. These two models feature unique forest specifications from the Komatsu Osaka factory;

- High & Wide undercarriage / Forestry Boom Set / Forestry Cabin

Options supplied from KF are;

- Large HD Cooling / Guarding Packages / Forestry Cabins

Komatsu's unique 'Forest Combinations'



Komatsu Forest Pty Ltd  
15C Hyland Crescent  
Rotorua, New Zealand  
John Kosar M: 0274 865 844  
Paul Roche M: 021 350 747  
E: info.au@komatsuforest.com