



## Komatsu PC270HW



Log Loader

Engine Power  
149 kW

Operating Weight  
31,500 kg

# PC270HW

# Komatsu Forest's Unique Forest Combination

## Specifications

### ENGINE

Model	Komatsu SAA6D107E-1
Type	Water-cooled, 4-cycle, direct injection
Aspiration	Turbocharged, aftercooled
Number of cylinders	6
Piston displacement	6.69 L
Horsepower	
SAE J1995	Gross 149 kW 200 HP
Rated rpm	2050 rpm

### HYDRAULICS

Type	HydrauMind
Number of selectable working modes	4
Main pump	
Type	Variable displacement piston type
Pumps for	Boom, arm, bucket, swing, and travel circuits
Maximum flow	450 L/min
Hydraulic motors	
Travel	2x axial piston motor
Swing	1x axial piston motor
Relief valve setting	
Implement circuits	37.3 MPa 380 kgf/cm <sup>2</sup>
Travel circuit	37.3 MPa 380 kgf/cm <sup>2</sup>
Swing circuit	28.9 MPa 295 kgf/cm <sup>2</sup>
Pilot circuit	3.2 MPa 33 kgf/cm <sup>2</sup>
Hydraulic cylinders	
Boom	2– 140 x 1300 x 100 mm
Arm	1– 150 x 1635 x 110 mm

### DRIVES AND BRAKES

Steering control	Two levers with pedals
Drive method	Hydrostatic
Maximum drawbar pull	264 kN 26,900 kgf
Gradeability	70%, 35°
Maximum travel speed (Auto-Shift)	
High	4.5 km/h
Mid	3.3 km/h
Low	2.8 km/h
Service brake	Hydraulic lock
Parking brake	Mechanical disc brake

### SWING SYSTEM

Drive method	Hydrostatic
Swing reduction	Planetary gear
Swing circle lubrication	Grease-bathed
Service brake	Hydraulic lock
Holding brake/Swing lock	Mechanical disc brake
Swing speed	10.5 rpm

### UNDERCARRIAGE

Center frame	X-frame
Track frame	Box-section
Seal of track	Sealed track
Track adjuster	Hydraulic
Number of shoes (Each side)	48
Number of carrier rollers	2 each side
Number of track rollers (Each side)	8

### COOLANT AND LUBRICANT CAPACITY (REFILLING)

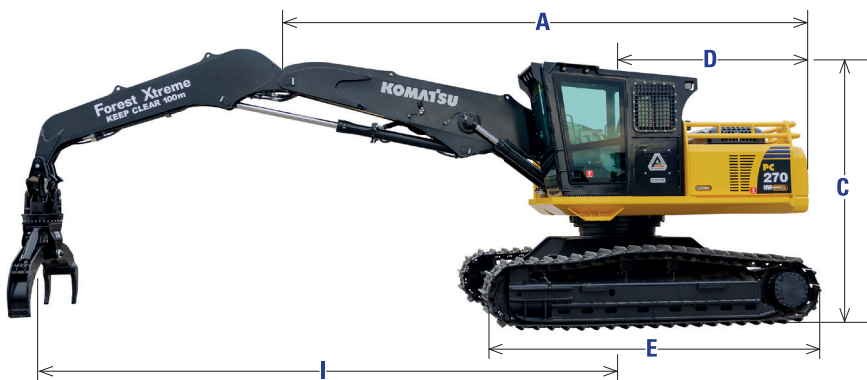
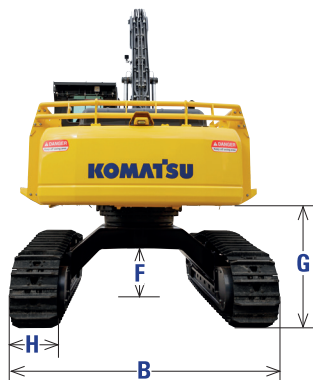
Fuel tank	400 L
Coolant	20.6 L
Engine	23.1 L
Final drive (Each side)	8.5 L
Swing drive	8.2 L
Hydraulic tank	132 L

### OPERATING WEIGHT

Operating Weight	31,500 kg
------------------	-----------

### MACHINE DIMENSIONS

A	Overall length	9,240 mm
B	Overall width (Track)	3,470 mm
C	Overall height	3,980 mm
D	Tail swing radius	2,940 mm
E	Crawler length	4,955 mm
F	Ground Clearance (Max)	865 mm
G	Ground Clearance (Counterweight)	1,590 mm
H	Track shoe width	600 mm
I	Boom Reach (Hinge Pin)	9,718 mm





## Komatsu PC270HW



Komatsu Forest working closely with Komatsu Ltd Japan have developed two new Forest Xtreme models the PC270HW & PC300HW. These two models feature unique forest specifications from the Komatsu Osaka factory;

- High & Wide undercarriage / Forestry Boom Set / Forestry Cabin

Options supplied from KF are;

- HD Guarding Packages / Forestry Cabins / Hydraulic Interface

Komatsu's unique 'Forest Combinations'



Komatsu Forest Pty Ltd.  
11/4 Avenue of Americas  
Newington NSW 2127 Australia  
T: +61 2 9647 3600  
E: [info.au@komatsuforest.com](mailto:info.au@komatsuforest.com)



## Komatsu PC270HW



Komatsu Forest working closely with Komatsu Ltd Japan have developed two new Forest Xtreme models the PC270HW & PC300HW. These two models feature unique forest specifications from the Komatsu Osaka factory;

- High & Wide undercarriage / Forestry Boom Set / Forestry Cabin

Options supplied from KF are;

- HD Guarding Packages / Forestry Cabins / Hydraulic Interface

Komatsu's unique 'Forest Combinations'



Komatsu Forest Pty Ltd  
15C Hyland Crescent  
Rotorua, New Zealand  
John Kosar M: 0274 865 844  
Paul Roche M: 021 350 747  
E: [info.au@komatsuforest.com](mailto:info.au@komatsuforest.com)