

## **Pre – Owned Forestry Equipment Available October 2023**



**Contact one of our sales team to discuss a deal**

**Nigel Howard – Used Equipment Manager - 0439 399 447**

E mail : [nigel.howard@komatsuforest.com](mailto:nigel.howard@komatsuforest.com)

**David Oliver – TAS, NSW - 0407 330 772**

E mail : [david.oliver@komatsuforest.com](mailto:david.oliver@komatsuforest.com)

**Brenton Yon – SA, WA - 0418 816 477**

E mail : [brenton.yon@komatsuforest.com](mailto:brenton.yon@komatsuforest.com)

## FORWARDER

Both  
Under  
Offer



**\$25-45,000 range**

**Machine** - Valmet 890.3/8 choice of 2  
**Serial Number** - 310345 & 310182  
**Hours** - 19,750 & 20,700  
**Year** - 2007 & 2006  
**Condition** - Fair  
**Comments** - Location Launceston



**\$140,000**

**Machine** - Komatsu 865/8  
**Serial Number** - 1731  
**Hours** - 10,000  
**Year** - 2016  
**Condition** - Good , Tyres are ave  
**Comments** - Location Launceston



**\$185,000**

**Machine** - Komatsu 895/8  
**Serial Number** - 260  
**Hours** - 12940  
**Year** - 2013-14  
**Condition** - Good Location Wodonga  
**Comments** - Full Service History & recent repair list



**\$65,000**

**Machine** - Komatsu 890.3  
**Serial Number** - 310246  
**Hours** - 22961  
**Year** - 2007  
**Condition** - Average  
**Comments** - Located in Tas

## Harvesters & Shovel



Machine - Valmet 911.4 - 365  
 Serial Number - 411119  
 Hours - 16100  
 Year - 2008  
 Condition - Fair artic has wear  
 Comments - Location QLD



Machine - Timberpro TL765D / Satco 630 with Heel  
 Serial Number - 578  
 Hours - 8200  
 Year - 2018  
 Condition - Good  
 Comments - Location Wodonga



Machine - Valmet 425EX Buncher boom  
 Serial Number - 2361  
 Hours -  
 Year -  
 Condition - Fair  
 Comments - Wodonga



Machine - Valmet 911.3 - 360  
 Serial Number - 311584  
 Hours - 22,350  
 Year - 2007  
 Condition - Fair  
 Comments - Location QLD



## Harvesters/FB



Machine – Komatsu 931-S132  
 Serial Number – 2126  
 Hours – 3642  
 Year – 2020  
 Condition – Good  
 Comments – Maxi Vision



Machine – Komatsu XT430L-2 / Waratah 618C  
 Serial Number – A2021  
 Hours – 13,000 approx  
 Year – Location launceston  
 Condition – Fair – New track chains supplied  
 Comments – HW wheels with TR100 controller



Machine – Timberpro TL765C – Woodman FH1350  
 Serial Number - 0449  
 Hours – 7633  
 Year – 2016  
 Condition – Good New chains & roller , Turbo  
 Comments – Location Wodonga



Machine – Komatsu PC300LC-8 / VHLC Pulpmate  
 Serial Number – 64016  
 Hours – 9500  
 Year – 2013  
 Condition – Good  
 Comments – Located Wodonga



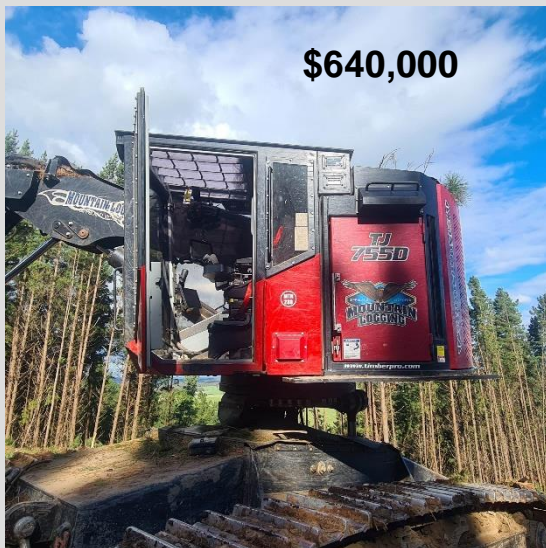
## Bunchers & Harvesters



Machine – Cat 320DFM – Waratah 618C  
 Serial Number – Base EAX00461  
 Year – 2015 Hrs TBC  
 Condition – Good. Located Launceston  
 Comments – Waratah TR100 controller



Machine – Komatsu XT460L – 23C  
 Serial Number – Base A4058  
 Year – 2014 Hrs 8500 Circa until Nov-Dec  
 Condition – Good. Located Vic  
 Comments – Timberite H – Chain high wear



Machine – Timberpro TL 775D-QB3500  
 Serial Number – 0765 Tanquay boom  
 Hours – 5000 approx  
 Year – 2020 Westcost XL track frame  
 Condition – Good tractionline anchor points  
 Comments – Very clean unit





## Harvesters & FB



Machine – Komatsu PC220LC-7 / Valmet 378  
 Serial Number – DBJ0872  
 Hours – Base – 16,100  
 Year – 2005-2006  
 Condition – Poison system fitted  
 Comments – Location Mt Gambier



Machine – JohnDeere 859M – JD 24 Disksaw  
 Serial Number – Base 277536  
 Hours – 12500 Circa until Nov  
 Year – 2016 Location Tas  
 Condition – Engine rebuild & new hydro pump in last 3000hrs approx  
 Comments – Recently fitted track chains



Machine - John Deere 1270G / 415  
 Serial Number – Base 4720  
 Hours – 6000 Circa until Jan  
 Year – 2019 Location Tas  
 Condition – Good  
 Comments – Tracks not included in price



Machine – Ponsse Scorpion – H7  
 Serial Number – Base C010626  
 Hours – 10,000 Circa until Jan Location Tas  
 Condition – Good  
 Comments – Tracks not included in price

SEPARATE HEADS & ATTACHMENTS

Head/Attachment	Serial No.	Location
Waratah 24	TBA	Wodonga
Rotobec Grapple & Rotator Model RPA4570R	Done approx. 500hrs	Mt Gambier \$30,000 + gst
Quadco 24"	118	Wodonga
Quadco Shear		Launceston
Waratah 616	384	Wodonga
378 Head	Ex 630/480	Wodonga

Head/Attachment	Serial No.	Ex Owner
QFH 2800	151	Tas
Komatsu 398 approx. 7000hrs	A5017	SOLD
600mm SBG	Ex 450FXL/3011	Wodonga
Boom Set	Ex T445	Wodonga
Stick Boom	Ex 450 FXL	Wodonga



# ***Komatsu Forest Used Equipment Terms & Conditions***

- All machine prices quoted do not include GST.
- All machines subject to prior sale & delivery.
- All machines quoted ex Komatsu Forest works unless otherwise stated.
- Machines available for inspection at Komatsu
- Contact your area contact to confirm location
- All offers are valid for thirty (30) days.
- All machines offered in “as is” condition unless specified otherwise